

Growing Figs in the South for  
Home Use 1968 -- Krezdon, A.  
H. Department of Fruit Crops  
University...

SEPARAR RESALTAR

Growing Figs in the South for Home Use  
1968

--

Krezdon, A. H.  
Department of Fruit Crops  
University of Florida  
and  
Crops Research Division  
Agricultural Research Service  
Home and Garden Bulletin 87, USDA, 1962  
11 pages  
Slightly revised January 1968

Archive copy of publication, do not use for current recommendations.

The PDF file was provided courtesy of the National Agricultural Library.

**Scroll down to view the publication.**  
**Agricultural Network Information Center**

Ag 84 Hg  
87 sl. rev.  
copy 1

#87

sl. rev. copy 1/68

# GROWING FIGS

## in the South

# for Home Use





**Home and Garden Bulletin No. 87**



**U.S. Department of Agriculture**

**GROWING FIGS  
in the South  
for Home Use**

Home and Garden Bulletin No. 87  
U.S. Department of Agriculture





# **GROWING FIGS in the South for Home Use**

**Information for this publication was furnished by A. H. Krezdorn, Head, Department of Fruit Crops, University of Florida, and by the Crops Research Division, Agricultural Research Service**

Fig trees make excellent doorway trees. They are more widely adapted to soils than most other fruit trees, and they require a minimum of care to produce fruit for eating fresh or for preserving. A

## **ADAPTATION**

The general area where fig trees are adapted is shown on the map.

Fig trees are injured by low winter temperatures. In general, figs are not adapted to areas where the

single tree will usually produce enough figs to meet the needs of one family.

To grow figs successfully, follow these rules:

- Choose varieties that are adapted to your area.
- Select a planting site where the tree will receive full sunlight most of the day.
- Plant the trees while they are dormant.
- Prune them annually to keep growth within bounds.
- Protect them from insect and disease damage.

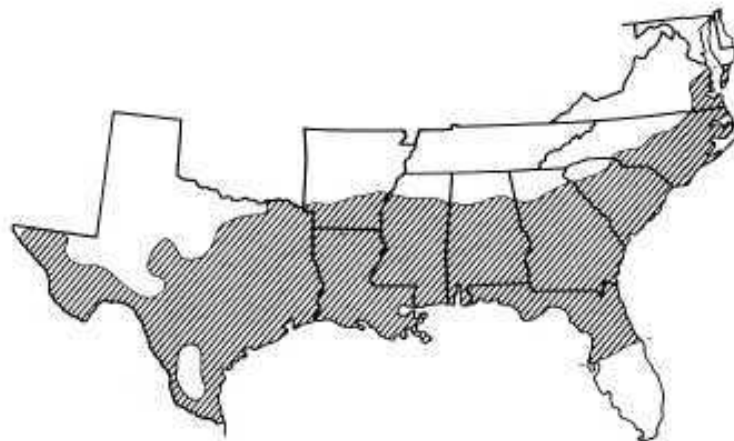
## 2

### **GROWING FIGS in the South for Home Use**

**Information for this publication was furnished by A. H. Krezdorn, Head, Department of Fruit Crops, University of Florida, and by the Crops Research Division, Agricultural Research Service**

Fig trees make excellent door-yard trees. They are more widely adapted to soils than most other fruit trees, and they require a mini-

are not adapted to areas where the temperature is frequently below 10° F. Even in the South, fig trees are frozen back by severe winter cold



BN-16571

**Area of the United States where  
fig trees are adapted.**

imum of care to produce fruit for eating fresh or for preserving. A single tree will usually produce enough figs to meet the needs of one family.

To grow figs successfully, follow these rules:

- Choose varieties that are adapted to your area.
- Select a planting site where the tree will receive full sunlight most of the day.
- Plant the trees while they are dormant.
- Prune them annually to keep growth within bounds.
- Protect them from insect and disease damage.

#### **ADAPTATION**

The general area where fig trees are adapted is shown on the map. Fig trees are injured by low winter temperatures. In general, figs are not adapted to areas where the temperature is frequently below 10° F. Even in the South, fig trees are frozen back by severe winter cold

**Area of the United States where fig trees are adapted.**

---

All statements and instructions in this bulletin about fig trees apply also to fig bushes, except where specific distinctions are made.

old wood and are poor in quality. They should be picked to aid control of fig diseases and insects.

Fruits of the main crop are borne in the axils of the leaves on the cur-



---

or by early-fall and late-spring freezes.

If fig trees are protected from low temperatures, they can be grown in areas farther north than is shown on the map. To protect the trees, plant them in a location where they are shielded from winter winds or plant them in containers and move them indoors during the winter.

Though fig trees are not harmed by high summer temperatures, long periods of daytime temperatures over 100° may cause the fruit to ripen prematurely and to be tough.

Fig trees grow best in deep, fertile soils, but they grow satisfactorily in soil types ranging from coarse sand to heavy clay. They grow well both in acid soils and in alkaline soils.

Because of damaging soil-borne organisms, figs do not grow well in several areas within the general area of adaptation. In central Florida, nematode damage to the

rent season's growth. Maturity starts with the oldest fruits at the base of the current shoot and progresses toward the tip.

After a tree is 5 years old, it can be expected to produce about 50 pounds of fruit a year, provided that it has made normal growth and has been cared for properly.

## RECOMMENDED VARIETIES

Table 1 lists six varieties of figs recommended for the South and gives some characteristics of each.

Of these six recommended varieties, Celeste and Brown Turkey are the best general-purpose figs for the South.

The fresh-fruit quality of *Celeste* is superior to that of the other varieties. During the dormant season, the wood of *Celeste* is slightly more



roots is severe. In some areas of southern Texas, cotton root rot is prevalent; this disease kills fig trees.

## FRUITING HABITS

All fig varieties recommended for the South produce a main crop of fruit that ripens in midsummer to late summer. Some varieties also produce a small crop, called the breba crop, that ripens in early summer. The brebas are borne on



BN-16086

**The main crop of fruit is borne in leaf axils on shoots of the current season's growth.**

**3**

All statements and instructions in this bulletin about fig trees apply also to fig bushes, except where specific distinctions are made.

or by early-fall and late-spring freezes.

If fig trees are protected from low temperatures, they can be grown in areas farther north than is shown on the map. To protect the trees, plant them in a location where they are shielded from winter winds or plant them in containers and move



them indoors during the winter. Though fig trees are not harmed by high summer temperatures, long periods of daytime temperatures over 100° may cause the fruit to ripen prematurely and to be tough. Fig trees grow best in deep, fertile soils, but they grow satisfactorily in soil types ranging from coarse sand to heavy clay. They grow well both in acid soils and in alkaline soils.

Because of damaging soil-borne organisms, figs do not grow well in several areas within the general area of adaptation. In central Florida, nematode damage to the roots is severe. In some areas of southern Texas, cotton root rot is prevalent; this disease kills fig trees.

### **FRUITING HABITS**

All fig varieties recommended for the South produce a main crop of fruit that ripens in midsummer to late summer. Some varieties also produce a small crop, called the breba crop, that ripens in early summer. The brebas are borne on old wood and are poor in quality. They should be picked to aid control of fig diseases and insects. Fruits of the main crop are borne in the axils of the leaves on the current season's growth. Maturity starts with the oldest fruits at the base of the current shoot and progresses toward the tip.

After a tree is 5 years old, it can be expected to produce about 50 pounds of fruit a year, provided that it has made normal growth and

has been cared for properly.

## RECOMMENDED

### VARIETIES

Table 1 lists six varieties of figs recommended for the South and gives some characteristics of each. Of these six recommended varieties, Celeste and Brown Turkey are the best general-purpose figs for the South.

The fresh-fruit quality of *Celeste* is superior to that of the other varieties. During the dormant season, the wood of Celeste is slightly more

**The main crop of fruit is borne in leaf axils on shoots of the current season's growth.**

tolerant of cold than the wood of other varieties.

*Brown Turkey* has the longest ripening season of the recommended varieties. If Brown Turkey is injured by freezing, it produces fair-to-good crops on sucker wood the next season. This is an advantage where spring frosts commonly damage fig trees. Brown Turkey is an excellent variety for growing in containers.

*Magnolia* is a weak grower. Its

vented if the fruit is picked just prior to full maturity and is used for preserves. *Magnolia* preserves are superior to preserves made from fruit of the other recommended varieties. Like Brown Turkey, *Magnolia* produces fair-to-good crops on sucker wood the season after injury from freezing.

The fruit of *Green Ischia* is of excellent quality when eaten fresh, but its extreme seediness detracts from its quality when it is pre-

fruit sours and splits badly during wet weather. This can be pre- served. Green Ischia is a good variety to grow in areas where fruit

TABLE 1.—Some characteristics of six fig varieties recommended for the South

Variety	Fruiting after severe freeze damage	Color of fruit	Size of fruit	Time of first ripening <sup>1</sup>
Brown Turkey	Fruits well	Bronze	Medium	Mid-July.
Celeste	No fruit	Light brown to violet.	Small	Mid-July.
Magnolia	Fruits well	Bronze with white flecks.	Medium	Late July.
Green Ischia	No fruit	Bright green	Medium	Late July to early August.
Hunt	No fruit	Dull bronze with white flecks and a distinct bloom.	Small to medium.	Early July to mid-July.
Kadota	Fruits fairly well.	Bright greenish yellow.	Small to medium.	Mid-July.

Variety	Length of ripening season	Quality of fruit	
		For eating fresh	For preserving
Brown Turkey	Long	Good	Excellent (moderately dark).
Celeste	Short	Very good	Excellent (dark colored).

Magnolia.....	Short (long when pruned heavily).	Fair.....	Excellent (light colored).
Green Ischia.....	Very short.....	Good.....	Good (seeds objectionable).
Hunt.....	Very short.....	Good.....	Excellent (dark colored).
Kadota.....	Short.....	Fair.....	Excellent (light colored).

<sup>1</sup> In extremely warm areas, may be 1 or 2 weeks earlier.

#### 4.

tolerant of cold than the wood of other varieties.

**Brown Turkey** has the longest ripening season of the recommended varieties. If Brown Turkey is injured by freezing, it produces fair-to-good crops on sucker wood the next season. This is an advantage where spring frosts commonly damage fig trees. Brown Turkey is an excellent variety for growing in containers.

**Magnolia** is a weak grower. Its fruit sours and splits badly during wet weather. This can be prevented if the fruit is picked just prior to full maturity and is used for preserves. Magnolia preserves are superior to preserves made from fruit of the other recommended varieties. Like Brown Turkey, Magnolia produces fair-to-good crops on sucker wood the season after injury from freezing.

The fruit of **Green Ischia** is of ex-

cellent quality when eaten fresh,  
but its extreme seediness detracts  
from its quality when it is pre-  
served. Green Ischia is a good va-  
riety to grow in areas where fruit

**TABLE 1. *Some characteristics of six fig varieties recommended for the South***

Variety
Brown Turkey
Celeste
Magnolia_
Green Ischia
Hunt _
Kadota_ _
Fruiting after severe freeze damage
Fruits well
No fruit
Fruits well
No fruit
No fruit
Fruits fairly well.
Color of fruit
Bronze
Light brown to violet.
Bronze with white flecks.
Bright green
Dull bronze with white flecks and a distinct bloom.
Bright greenish yellow.
Size of fruit
Medium



Small  
Medium  
Medium  
Small to  
medium.  
Small to  
medium.  
Time of  
first ripening '  
Mid-July.  
Mid-July.  
Late July.  
Late July to  
early August.  
Early July to  
mid-July.  
Mid- July.  
Variety  
Brown Turkey .  
Celeste  
Magnolia  
Green Ischia  
Hunt  
Kadota  
Length of ripening  
season  
Long  
Short  
Short (long when  
pruned heavily).  
Very short  
Very short  
Short  
For eating  
fresh  
Good  
Very good  
Fair  
Good  
Good  
Fair

Quality of fruit

For preserving

Excellent (moderately dark).

Excellent (dark colored).

Excellent (light colored).

Good (seeds objectionable) .

Excellent (dark colored).

Excellent (light colored).

1

In extremely warm areas, may be 1 or 2 weeks earlier.

damage by birds is severe; the bright-green color of its fruit is less attractive to birds than the colors of fruits of the other recommended varieties.

*Hunt* is a relatively new variety that is somewhat tender to cold. It is grown primarily in Louisiana; little is known about its adaptability elsewhere. The main attributes of *Hunt* are good fresh-fruit quality and resistance to souring.

*Kadota* is not widely grown in the South but it does extremely well in the west and in southwest Texas. *Kadota* is another of the varieties that produce a fair-to-good crop of fruit on sucker wood the season

sold throughout the South as *Everbearing* or *Texas Everbearing*.

If you buy fig trees from sources outside the South, be sure they are self-fruiting; otherwise, they will fail to fruit properly.

## PLANTING

### When To Plant

Plant fig trees while they are dormant; spring is the best time. In warm areas, bare-rooted trees can be set out in fall or early winter; but where late spring frosts are common, it is best to set them out in spring after danger of hard winter freezes has passed. Container-

after injury from cold.

## SELECTING A VARIETY

Choose a fig variety that will best meet your needs. Consider whether you want fruit for eating fresh, or fruit for preserving only.

Be sure the variety you choose is adapted to the climate of your area. Ask your county agricultural agent or your State agricultural experiment station for recommendations for your locality.

There is considerable confusion over variety names. Mislabeled varieties often result in fruit failure. Magnolia is sold by California nurseries as Brunswick. The Turkey or Brown Turkey of California is not the Brown Turkey recommended for the South, even though it is mistakenly sold as such. To be sure of getting the right variety in the South, buy Brown Turkey nursery stock from a southern nursery. Brown Turkey also is widely

grown plants should always be planted in spring.

## Where To Plant

For best growth, fig trees need full sunlight and freedom from competing trees and shrubs.

A good place to plant fig trees is on the sunniest side of a building. Plant them about 4 feet from the building. The roots will grow under the building where they will be protected from nematode injury.

Roots of fig trees will not damage masonry foundations of buildings or steel pipe, but they may damage clay sewer pipe. Do not plant fig trees within 25 feet of clay sewer pipe or over septic tank drain fields.

If you plant fig trees in a lawn, keep a 2- to 3-foot area around each tree free of grass for a year or two until the tree becomes established.

Do not plant fig trees close to such rapid-growing plants as mulberry, chinaberry, hackberry, elm,

damage by birds is severe; the bright-green color of its fruit is less attractive to birds than the colors of fruits of the other recommended varieties.

**Hunt** is a relatively new variety that is somewhat tender to cold. It is grown primarily in Louisiana; little is known about its adaptability elsewhere. The main attributes of Hunt are good fresh-fruit quality and resistance to souring.

**Kadota** is not widely grown in the South but it does extremely well in the west and in southwest Texas. Kadota is another of the varieties that produce a fair-to-good crop of fruit on sucker wood the season after injury from cold.

#### **SELECTING A VARIETY**

Choose a fig variety that will best meet your needs. Consider whether you want fruit for eating fresh, or fruit for preserving only.

Be sure the variety you choose is adapted to the climate of your area. Ask your county agricultural agent or your State agricultural experiment station for recommendations for your locality.

There is considerable confusion over variety names. Mislabeled varieties often result in fruit fail-

ure. Magnolia is sold by California nurseries as Brunswick. The Turkey or Brown Turkey of California is not the Brown Turkey recommended for the South, even though it is mistakenly sold as such. To be sure of getting the right variety in the South, buy Brown Turkey nursery stock from a southern nursery. Brown Turkey also is widely sold throughout the South as Everbearing or Texas Everbearing. If you buy fig trees from sources outside the South, be sure they are self-fruiting; otherwise, they will fail to fruit properly.

## **PLANTING**

### **When To Plant**

Plant fig trees while they are dormant; spring is the best time. In warm areas, bare-rooted trees can be set out in fall or early winter; but where late spring frosts are common, it is best to set them out in spring after danger of hard winter freezes has passed. Container-grown plants should always be planted in spring.

### **Where To Plant**

For best growth, fig trees need full sunlight and freedom from competing trees and shrubs.

A good place to plant fig trees is on the sunniest side of a building.

Plant them about 4 feet from the building. The roots will grow under the building where they will be protected from nematode injury.

Roots of fig trees will not damage masonry foundations of buildings or steel pipe, but they may damage



clay sewer pipe. Do not plant fig trees within 25 feet of clay sewer pipe or over septic tank drain fields. If you plant fig trees in a lawn, keep a 2- to 3-foot area around each tree free of grass for a year or two until the tree becomes established. Do not plant fig trees close to such rapid-growing plants as mulberry, chinaberry, hackberry, elm,

black locust, and privet. These plants will use water and nutrients needed by the fig trees.

Soils in orchards and old gardens generally are heavily infested with nematodes. Treat such soils with a nematocide before planting (see p. 9). Young trees must be protected from nematodes if they are to get a good start.

### **How To Plant**

Fig trees from nurseries may be grown in the field and sold bare rooted, or they may be grown in containers and sold while still in the container.

tree, prune off about one-third of its top, unless it was topped by the nursery. Container-grown plants can be transplanted without being pruned; they need only to be removed from the container and set in the planting hole.

Set fig trees in the planting hole so they are 3 or 4 inches deeper than they were in the nursery. Fill the hole with soil; water heavily enough to settle the soil around the roots.

### **TRAINING AND PRUNING**

Though fig plants can be trained to either tree or bush form, the tree form is not practical for the South;

Before planting a bare-rooted in this region, fig plants frequently



PN-1053

**Figs trained to bush form.**

## 6

black locust, and privet. These plants will use water and nutrients needed by the fig trees.

Soils in orchards and old gardens generally are heavily infested with nematodes. Treat such soils with a nematocide before planting (see p. 9). Young trees must be protected from nematodes if they are to get a good start.

### **How To Plant**

Fig trees from nurseries may be grown in the field and sold bare rooted, or they may be grown in containers and sold while still in the container.

Before planting a bare-rooted tree, prune off about one-third of its top, unless it was topped by the nursery. Container-grown plants can be transplanted without being pruned; they need only to be removed from the container and set in the planting hole.

Set fig trees in the planting hole so they are 3 or 4 inches deeper than they were in the nursery. Fill the hole with soil; water heavily enough to settle the soil around the roots.

### **TRAINING AND PRUNING**

Though fig plants can be trained to either tree or bush form, the tree form is not practical for the South;

in this region, fig plants frequently  
**Figs trained to bush form.**

are frozen back to the ground, making the tree form difficult to maintain.

Begin training to bush form at time of planting; cut back the young plant to about one-half its height. This forces shoots to grow from the base of the plant. Let these shoots grow through the first season. Then, during the winter after planting, select three to eight vigorous, widely spaced shoots to serve as leaders. Remove all other shoots and prune the leaders back to within 1 foot of the ground.

Be sure the leaders that you select are far enough apart so they can grow to 3 or 4 inches in diameter without crowding each other. If they are too close together they cannot grow thick enough to support themselves and their crop, and they tend to blow down or split off under

organisms. Make all pruning cuts back to a bud or branch.

## CULTIVATING

Fig trees require only light cultivation to keep weeds down and to break up surface crusts. Hoeing should be shallow; otherwise, the tree's feeder roots may be damaged.

## MULCHING

To promote good growth and corresponding high yields of large fruit, mulch the fig tree when it is set out and maintain the mulch throughout the year.

Hay, corncobs, pine needles, or sawdust make good mulching materials. Apply the mulch 4 to 6 inches deep from the tree trunk to several feet beyond the tips of the branches.

stress of high winds. If this happens, remove the damaged leader and select a new leader the next winter from one of the many suckers that arise annually.

Beginning the second year after planting, head back the bush each spring after danger of frost is past but before growth has started. Do this by removing about one-third to one-half the length of the annual growth.

Also prune out all dead wood and remove branches that interfere with growth of the leaders. Cut off low-growing lateral branches and all sucker growth that is not needed for replacement of broken leaders.

Do not leave bare, unproductive stubs when you prune. These stubs are entry points for wood decay

## FERTILIZING

Fig trees grow satisfactorily in moderately fertile soils without fertilizer. But fertilizer is needed in soils of very low fertility or where competition from other plants is heavy.

Though nitrogen usually is the only element that is deficient, other elements may be lacking in some areas. If poor growth indicates the need for fertilizer, follow these general guides:

Use a fertilizer with an analysis of 8-8-8.

For feeding plants 1 to 2 years old, apply  $\frac{1}{3}$  pound of fertilizer each month from the beginning of growth through the end of August.



are frozen back to the ground, making the tree form difficult to maintain.

Begin training to bush form at time of planting; cut back the young plant to about one-half its height. This forces shoots to grow from the base of the plant. Let these shoots grow through the first season. Then, during the winter after planting, select three to eight vigorous, widely spaced shoots to serve as leaders. Remove all other shoots and prune the leaders back to within 1 foot of the ground.

Be sure the leaders that you select are far enough apart so they can grow to 3 or 4 inches in diameter without crowding each other. If they are too close together they cannot grow thick enough to support themselves and their crop, and they tend to blow down or split off under stress of high winds. If this happens, remove the damaged leader and select a new leader the next winter from one of the many suckers that arise annually.

Beginning the second year after planting, head back the bush each spring after danger of frost is past but before growth has started. Do this by removing about one-third to one-half the length of the annual growth.

Also prune out all dead wood and remove branches that interfere with growth of the leaders. Cut off low-growing lateral branches and all sucker growth that is not needed for replacement of broken leaders.

Do not leave bare, unproductive stubs when you prune. These stubs are entry points for wood decay organisms. Make all pruning cuts back to a bud or branch.

### **CULTIVATING**

Fig trees require only light cultivation to keep weeds down and to break up surface crusts. Hoeing should be shallow; otherwise, the tree's feeder roots may be damaged.

### **MULCHING**

To promote good growth and corresponding high yields of large fruit, mulch the fig tree when it is set out and maintain the mulch throughout the year.

Hay, corncobs, pine needles, or sawdust make good mulching materials. Apply the mulch 4 to 6 inches deep from the tree trunk to several feet beyond the tips of the branches.

### **FERTILIZING**

Fig trees grow satisfactorily in moderately fertile soils without fertilizer. But fertilizer is needed in soils of very low fertility or where competition from other plants is heavy.

Though nitrogen usually is the only element that is deficient, other elements may be lacking in some areas. If poor growth indicates the need for fertilizer, follow these general guides:

Use a fertilizer with an analysis of 8-8-8.

For feeding plants 1 to 2 years old, apply 1/3 pound of fertilizer each month from the beginning of

growth through the end of August.

Apply fertilizer to larger plants three times a year—late winter, early June, and late July.

Use a total of 12 pounds of 8-8-8 each year for a bush 12 to 15 feet tall. For smaller plants, use about 1 pound of fertilizer annually—in three applications—for each foot of height.

## WATERING

For highest yields, figs need watering throughout the summer.

The frequency of watering and the amount of water to apply depend to a large extent on the soil. Soils that are shallow or that do not hold moisture will need frequent watering. Generally, watering is adequate if shoot growth continues and leaf size is normal. Yellowing and dropping of leaves may indicate either overwatering or drought.

## PROPAGATING

Propagate figs from cuttings. To do this—

- Make the cuttings in late winter from the previous season's growth. The cuttings should be 8 to 10 inches long.

- Use straight, vigorous wood not over three-fourths of an inch in diameter.

- Make the basal cut just below a joint, or node.

To root cuttings directly in the garden, plant them so only the top bud of each cutting remains above-ground. Water sparingly.

To root a cutting in a container, keep the top bud or two above the soil and the basal end 2 to 3 inches above the bottom of the container. Cut holes in the container to assure proper drainage. Water the cutting when it is placed in the con-

In lawns, the grass beneath fig trees may wilt in the heat while the rest of the lawn does not. This indicates that the figs need water. Figs grown with lawn grasses may require one or more waterings a week during hot, dry periods.

## **PROTECTING FROM WINTER INJURY**

Young bushes or trees should be protected from winter injury in very cold areas during their first 2 years.

In late fall pile loose soil around the bases of young bushes or trees to a height of 1 to 2 feet. Remove soil in spring after danger of frost is past.

**8**

tainer; do not water again until it has leafed out, unless the soil becomes quite dry. After the plant leafs out, water it in the same way that you would any other potted plant.

Protect the plant from freeze damage over winter. In spring, set it out as directed under "Planting" (p. 5).

## **PESTS AND DISEASES**

### **Insects**

Fig trees and their fruit may be damaged by beetles (including borers), mealybugs, and scale insects. The Magnolia variety is especially vulnerable to the dried-fruit beetle, which enters the eye of

three times a year?late winter, early June, and late July.

Use a total of 12 pounds of 8-8-8 each year for a bush 12 to 15 feet tall. For smaller plants, use about 1 pound of fertilizer annually?in three applications?for each foot of height.

### **WATERING**

For highest yields, figs need watering throughout the summer. The frequency of watering and the amount of water to apply depend to a large extent on the soil. Soils that are shallow or that do not hold moisture will need frequent watering. Generally, watering is adequate if shoot growth continues and leaf size is normal. Yellowing and dropping of leaves may indicate either overwatering or drought. In lawns, the grass beneath fig trees may wilt in the heat while the rest of the lawn does not. This indicates that the figs need water. Figs grown with lawn grasses may require one or more waterings a week during hot, dry periods.

### **PROTECTING FROM**

#### **WINTER INJURY**

Young bushes or trees should be protected from winter injury in very cold areas during their first 2 years.

In late fall pile loose soil around the bases of young bushes or trees to a height of 1 to 2 feet. Eemove soil in spring after danger of frost is past.

### **PROPAGATING**

Propagate figs from cuttings. To

do this?

- Make the cuttings in late winter from the previous season's growth. The cuttings should be 8 to 10 inches long.
- Use straight, vigorous wood not over three-fourths of an inch in diameter.
- Make the basal cut just below a joint, or node.

To root cuttings directly in the garden, plant them so only the top bud of each cutting remains above-ground. Water sparingly.

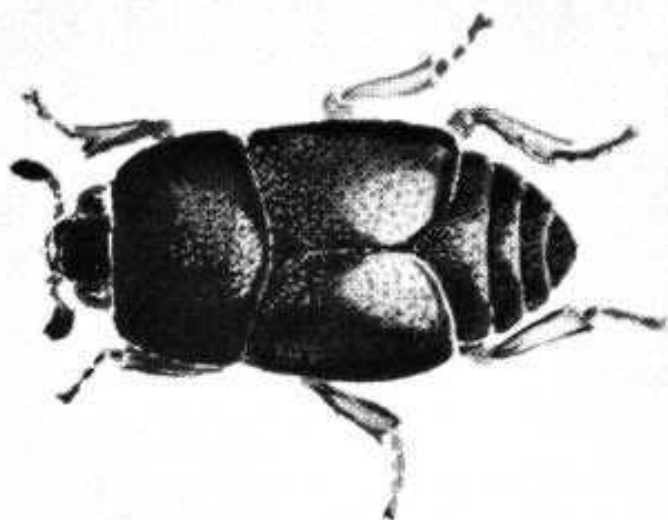
To root a cutting in a container, keep the top bud or two above the soil and the basal end 2 to 3 inches above the bottom of the container. Cut holes in the container to assure proper drainage. Water the cutting when it is placed in the container; do not water again until it has leafed out, unless the soil becomes quite dry. After the plant leafs out, water it in the same way that you would any other potted plant.

Protect the plant from freeze damage over winter. In spring, set it out as directed under "Planting" (p. 5).

## **PESTS AND DISEASES**

### **Insects**

Fig trees and their fruit may be damaged by beetles (including borers), mealybugs, and scale insects. The Magnolia variety is especially vulnerable to the dried-fruit beetle, which enters the eye of



BN-16570

**Dried-fruit beetle. (About 13 times natural size.)**

the fruit and causes the fruit to sour.

You can help protect your trees and fruits against insects by—

- Pruning and burning infested limbs.
- Destroying their breeding places—cleaning up leaf trash, grass piles, and fallen fruit.
- Picking the fruit before it

creased vigor, produce smaller fruit, and drop their fruit prematurely.

In clay soils or in sandy soils having a clay subsoil within 2 or 3 feet of the surface, tree growth and fruiting are usually normal; clay soils do not support heavy nematode buildups.

In areas where nematodes are a serious problem, plant figs near a building where roots can extend under the building to soil relatively free of nematodes.

In old orchard or garden sites having sandy soils, nematode infestation is usually so severe that it is often impractical to plant figs unless the soil is first treated with a nematocide. It is also well to treat the soil in lawn areas with a nematocide before planting figs there. In either case, treat an area of about 9 to 12 square feet around each tree according to the nematocide manu-



fully ripens if it is to be used for preserving only.

If damage persists, send insect specimens to your county agricultural agent or State agricultural experiment station for identification; ask for control recommendations.

### Nematodes

Nematodes are tiny soil worms. They stunt or kill fig trees by attacking the roots.

In deep, sandy soils, young trees are severely stunted and occasionally killed by nematodes. Older trees that have had a chance to become established before nematode infestation has built up in the soil are less affected, but may show de-

fecture's instructions. **Warning:** Some nematocides severely damage plants; follow instructions on the label.

### Fig Rust

Fig rust is a fungus disease that attacks young fig leaves but does not injure mature leaf tissue. Leaves affected by fig rust fall prematurely; the affected trees are more susceptible to cold injury than are healthy trees.

You can recognize fig rust by the small, yellowish-green spots that appear on leaves. These spots enlarge and turn yellowish brown. The leaves often become distorted.

To control fig rust, rake up and

the fruit and causes the fruit to sour.

You can help protect your trees and fruits against insects by?

- Pruning and burning infested limbs.

- Destroying their breeding places?cleaning up leaf trash, grass piles, and fallen fruit.

- Picking the fruit before it fully ripens if it is to be used for preserving only.

If damage persists, send insect specimens to your county agricultural agent or State agricultural experiment station for identification; ask for control recommendations.

### **Nematodes**

Nematodes are tiny soil worms.

They stunt or kill fig trees by attacking the roots.

In deep, sandy soils, young trees are severely stunted and occasionally killed by nematodes. Older trees that have had a chance to become established before nematode infestation has built up in the soil are less affected, but may show decreased vigor, produce smaller fruit, and drop their fruit prematurely.

In clay soils or in sandy soils having a clay subsoil within 2 or 3 feet

**of**

the surface, tree growth and fruiting are usually normal; clay soils do not support heavy nematode buildups.

In areas where nematodes are a serious problem, plant figs near a building where roots can extend under the building to soil relatively

free of nematodes.

In old orchard or garden sites having sandy soils, nematode infestation is usually so severe that it is often impractical to plant figs unless the soil is first treated with a nematocide. It is also well to treat the soil in lawn areas with a nematocide before planting figs there. In either case, treat an area of about 9 to 12 square feet around each tree according to the nematocide manufacturer's instructions. **Warning:** Some nematocides severely damage plants; follow instructions on the label.

### Fig Rust

Fig rust is a fungus disease that attacks young fig leaves but does not injure mature leaf tissue. Leaves affected by fig rust fall prematurely; the affected trees are more susceptible to cold injury than are healthy trees.

You can recognize fig rust by the small, yellowish-green spots that appear on leaves. These spots enlarge and turn yellowish brown. The leaves often become distorted. To control fig rust, rake up and

9

TABLE 2.—*Common causes of fruit failure*

Condition	Probable cause	Suggested remedies
-----------	----------------	--------------------

All fruit drops when $\frac{1}{3}$ to $\frac{2}{3}$ full size.	Wrong variety for area (requires pollination).	Destroy tree and replant with recommended variety.
Leaves drop off prematurely; fruit withers and fails to mature.	Fig rust or other leaf-spot diseases, or a twig blight.	Use 4-4-50 Bordeaux spray. Rake up and burn old leaves.
Fruiting is poor; tree growth is retarded. Roots have knots or galls and are distorted.	Nematode damage.	Use a commercial nematocide; mulch; or plant tree next to a building.
Fruit fails to mature; leaves are small. Vigorous new wood arises from the base.	Low temperatures have killed some stem tissues.	Cut tree back to ground level and develop a new top from suckers that arise.
Fruit sours and many split.	Unsuitable variety or unusually wet year.	If unsuitable variety, replant with Brown Turkey, Celeste, Green Ischia, or Hunt; or pick fruit prior to maturity and preserve.
Fruit is tough and falls prematurely during hot, dry weather (Celeste only).	Excessive heat.	No control.

burn old leaves. Apply a 4-4-50 Bordeaux spray (available from garden-supply dealers).

Spray all new leaves, particularly the undersides. Begin spraying as soon as the first leaves have expanded to full size. Apply spray

This spray schedule also controls other fungal leaf-spot diseases and twig blights of fig.

### COMMON CAUSES OF FRUIT FAILURE

The fruit from your tree may be

...to full size. Apply spray every 3 or 4 weeks during normal weather, more often during rainy weather.

The fruit from your tree may be poor or the yield may be lower than expected; common causes and suggested remedies are listed in table 2.

## 10

TABLE 2. *Common causes of fruit failure*

Condition

All fruit drops when  $\frac{1}{2}$  to  
% full size.

Leaves drop off prema-  
turely; fruit withers and  
fails to mature.

Fruiting is poor; tree  
growth is retarded.

Roots have knots or  
galls and are distorted.

Fruit fails to mature;

leaves are small. Vigorous new wood arises from the base.

Fruit sours and many split.

Fruit is tough and falls prematurely during hot, dry weather (Celeste only) .

Probable cause

Wrong variety for area (requires pollination).

Fig rust or other leaf-spot diseases, or a twig blight.

Nematode damage.

Low temperatures have killed some stem tissues.

Unsuitable variety or unusually wet year.

Excessive heat.

Suggested remedies

Destroy tree and replant with recommended variety.

Use 4-4-50 Bordeaux spray.

Rake up and burn old leaves.

Use a commercial nematocide; mulch; or plant tree next to a building.

Cut tree back to ground level and develop a new top from suckers that arise.

If unsuitable variety, replant with Brown Turkey, Celeste, Green Ischia, or Hunt; or pick fruit prior to maturity and preserve.

No control.

burn old leaves. Apply a 1 1 50 Bordeaux spray (available from garden-supply dealers).

Spray all new leaves, particularly the undersides. Begin spraying as soon as the first leaves have expanded to full size. Apply spray every 3 or 4 weeks during normal weather, more often during rainy weather.

This spray schedule also controls other fungal leaf-spot diseases and twig blights of fig.

### **COMMON CAUSES OF FRUIT FAILURE**

The fruit from your tree may be poor or the yield may be lower than expected; common causes and suggested remedies are listed in table 2.

10

## **HARVESTING**

For eating fresh, pick figs as soon as they ripen. They have the best flavor then.

For preserving, pick figs several days before they fully ripen. This reduces damage from souring and splitting; the fruit also holds together better when cooked.

In pulling fruit from tree, leave stem attached to fruit. Wear gloves to protect your hands from the irritating milky juice.

Remove all fallen fruit daily from around the tree to keep down insects and other pests.

In areas where bird damage is severe, pick fruit early in the morning.



---

## CAUTION

If pesticides are handled, applied, or disposed of improperly, they can be injurious to humans, domestic animals, desirable plants, and pollinating insects, fish, or other wildlife, and may contaminate water supplies. Use pesticides only when needed and handle them with care. Follow the directions and heed all precautions on the container label.

---



This bulletin supersedes Farmers' Bulletin 1031, "Fig Growing in the South Atlantic and Gulf States."

Washington, D.C.

Issued December 1962  
Slightly Rev. January 1968

U.S. GOVERNMENT PRINTING OFFICE : 1968—O—290-170

---

For sale by the Superintendent of Documents, U.S. Government Printing Office  
Washington, D.C. 20402 - Price 10 cents

**11**

### **HARVESTING**

For eating fresh, pick figs as soon as they ripen. They have the best flavor then.

For preserving, pick figs several days before they fully ripen. This reduces damage from souring and splitting; the fruit also holds together better when cooked.

In pulling fruit from tree, leave stem attached to fruit. Wear gloves to protect your hands from the irritating milky juice.

Remove all fallen fruit daily from around the tree to keep down insects and other pests.

In areas where bird damage is severe, pick fruit early in the morning.

### **CAUTION**

If pesticides are handled, applied, or disposed of improperly, they can be injurious to humans, domestic animals, desirable plants, and pollinating insects, fish, or other wildlife, and may contaminate water supplies. Use

pesticides only when needed and handle them with care. Follow the directions and heed all precautions on the container label.

**FOLLOW THE LABEL**

U.S. B F P A I I M E M T O F S G J I C U I

This bulletin supersedes Farmers' Bulletin 1031, "Fig Growing in the South Atlantic and Gulf States."

Washington, D.C.

Issued December 1962

Slightly Rev. January 1968

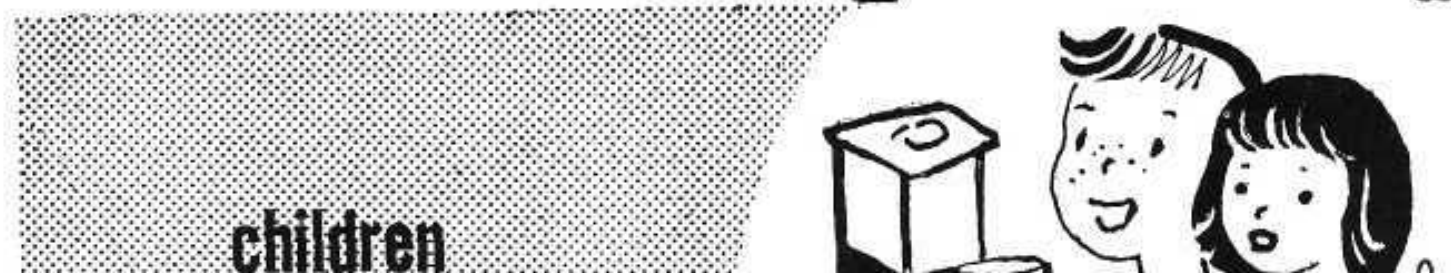
U.S. GOVERNMENT PRINTING OFFICE : 1968?O-290-170

For sale by the Superintendent of Documents, U.S. Government Printing Office

Washington, D.C. 20402- Price 10 cents

11

**do you and your family  
get enough MILK  
each day?**



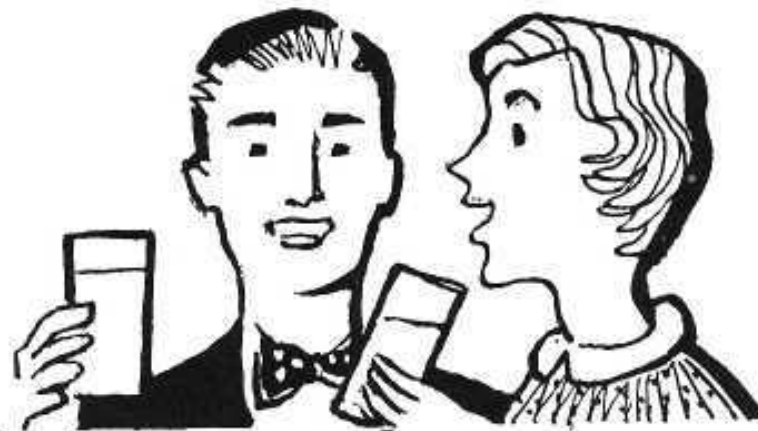
**3 to 4 cups**



**teen-agers**  
**1 quart or more**



**adults**  
**1 pint or more**



**MILK is one of our best foods . . .**  
**. . . use MILK daily**

For suggestions about ways to use milk in meals see Home and Garden Bulletin No. 127, Milk in Family Meals: A Guide for Consumers, available from the U.S. Department of Agriculture, Washington, D.C. 20250.

do you and your family  
get enough MILK  
each day?

teen-agers

1 quart or more

|||||||

For suggestions about ways to use milk  
in meals see Home and Garden Bulletin  
No. 127, Milk in Family Meals: A Guide  
for Consumers, available from the U.S.  
Department of Agriculture, Washington,  
D.C. 20250.

MILK is one of our best foods